

ANTONIO VIVALDI

# CONCERTO in Do Maggiore



per Flautino, Archi e Cembalo

F. VI n. 4

(G. F. Malipiero)

Nelle pubbliche esecuzioni  
è obbligatorio inserire nei  
programmi il nome del revisore

Allegro

CONTRABBASSO



5



10



15

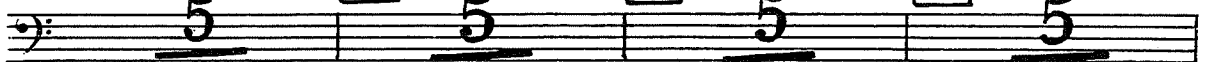


20

25

30

35



40



45



50

55



Musical score for bass clef, measures 60-165. The score includes various rhythmic patterns and dynamics. Measure 60 has a '5' marking. Measure 65 has a '2' marking. Measure 70 has a '3' marking. Measure 75 has a '3' marking. Measure 80 has a '3' marking. Measure 85 has a '5' marking. Measure 90 has a '5' marking. Measure 95 has a '5' marking. Measure 100 has a '2' marking. Measure 105 has a '5' marking. Measure 110 has a '5' marking. Measure 115 has a '5' marking. Measure 120 has a '5' marking. Measure 125 has a '5' marking. Measure 130 has a '5' marking. Measure 135 has a '5' marking. Measure 140 has a '3' marking. Measure 145 has a '5' marking. Measure 150 has a '5' marking. Measure 155 has a '5' marking. Measure 160 has a '4' marking. Measure 165 has a '4' marking. The score includes dynamics such as *f* and markings such as (16.) and 17 v.

Largo

Musical score for bass clef, measures 160-165, marked *Largo*. The score includes a key signature of one sharp (F#) and a time signature of 12/8. Measure 160 has a '4' marking. Measure 165 has a '4' marking. The score includes a double bar line and a repeat sign.

Allegro molto

170

175

180

185

190

195

200

205

210

215

220

225

230

235

240

245