

Modest Mussorgsky

---

## Tableaux d'une Exposition

Arr. Maurice Ravel

9. La Cabane sur des pattes de poule

10. La grande porte de Kiev

Edited for

Festival Orchestra Play-Along Project

Simplified Part - Violin 2

---

This part has been edited for length and for performance alongside a recording of the Arizona Musicfest Festival Orchestra performance of *Pictures at an Exhibition* in February 2020.

The reference recording may be found at:  
<https://azmusicfest.org/festival-orchestra-play-along/>

Please visit the link for more information.

Cuts include:

Rehearsal Numbers 88 - 101

Rehearsal Numbers 106 - 109

Rehearsal Numbers 115 - 121

All cuts should be performed without break - unless noted (see fermata at 121).

## Tableaux d'une Exposition

9. La Cabane sur des pattes de poule  
(BABA-YAGA)Modest Mussorgsky  
arr. Maurice Ravel

79 Allegro con brio, féroce



80



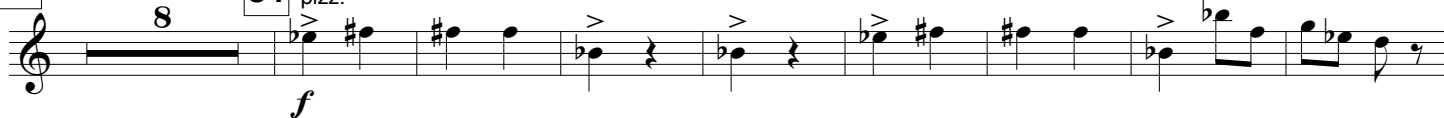
81



82



83



84



85



86



87



101

Musical notation for measure 101, featuring a treble clef, a key signature of two flats, and a dynamic marking of *ff*. The measure contains a sequence of eighth notes with rests, ending with a triplet of eighth notes.

102 CODA

Musical notation for measure 102, marked as a CODA. It begins with a four-measure rest, followed by a series of eighth notes and a final chord.

# 10. La grande porte de Kiev

103

Allegro alla breve. Maestoso. Con grandezza.

104

Musical notation for measures 103 and 104, showing two long horizontal lines representing rests of 12 and 9 measures respectively.

105

Musical notation for measure 105, featuring a treble clef, a key signature of two flats, and a dynamic marking of *ff*. The measure contains a series of half notes, with an accent mark over the fourth note.

109

110

Musical notation for measures 109 and 110. Measure 109 is a 17-measure rest, and measure 110 is a 4-measure rest. The notation then continues with a series of eighth notes in a 6/4 time signature, starting with a dynamic marking of *p*.

111

Musical notation for measure 111, featuring a treble clef, a key signature of two flats, and a 3/2 time signature. The measure contains a series of eighth notes with a dynamic marking of *p* and a *cresc.* marking.

112

Musical notation for measure 112, featuring a treble clef, a key signature of two flats, and a 3/2 time signature. The measure contains a series of eighth notes with a dynamic marking of *f* and a *tremolo* marking.

113

Musical notation for measure 113, featuring a treble clef, a key signature of two flats, and a 3/2 time signature. The measure contains a series of eighth notes with a dynamic marking of *mf* and a *cresc.* marking.

114

121

Musical notation for measures 114 and 121. Measure 114 is a 12-measure rest, and measure 121 is a 12-measure rest. The notation then continues with a series of half notes, starting with a dynamic marking of *ff*.

122

Musical notation for measure 122, featuring a treble clef, a key signature of two flats, and a 3/2 time signature. The measure contains a series of half notes, ending with a dynamic marking of *ff*.