

# HYMN TO THE FALLEN

CONTRA BASSOON  
(Bassoon)

JOHN WILLIAMS

Reverently

6

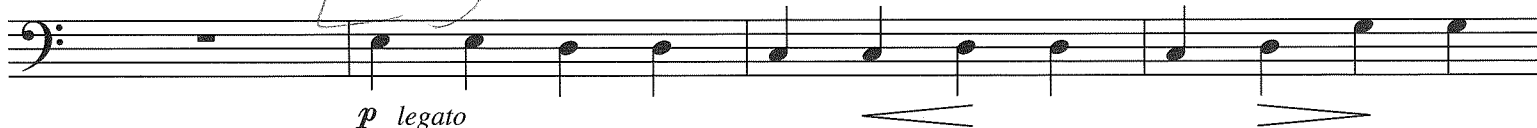


1

7

Bassoon

*p legato*

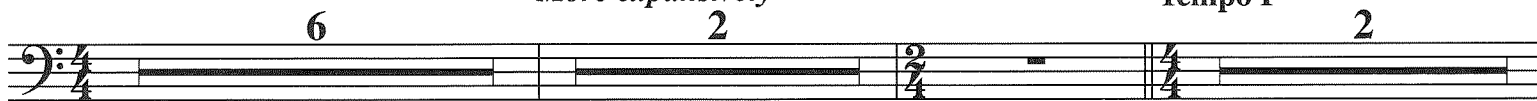


28 Move a little (poco rubato)



More expansively

Tempo I

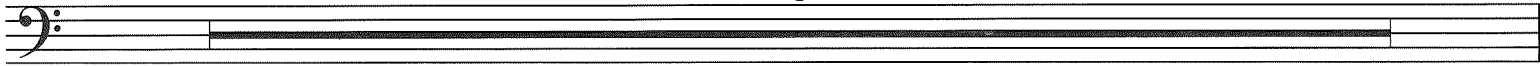


32

CONTRA BASSOON

43 (Cls.)

8



(Bsn.)



51 *mp*

to Contra Bsn.

3

Contra Bsn. (w/Brass)

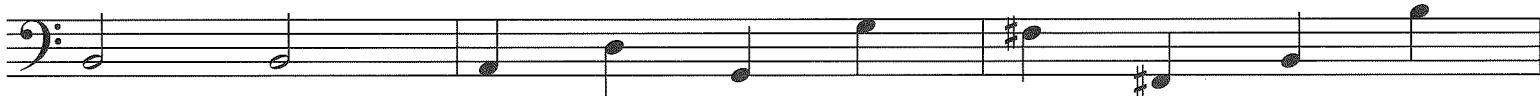


55 *mf*

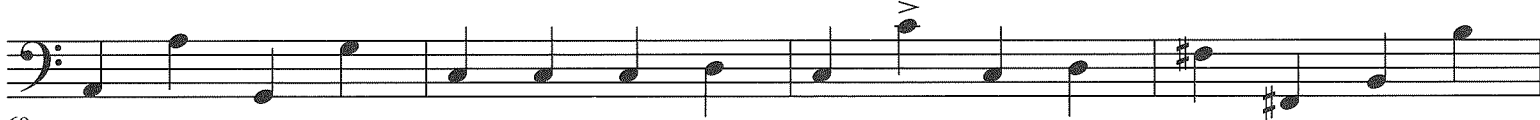
62 *Broadly and expansively*



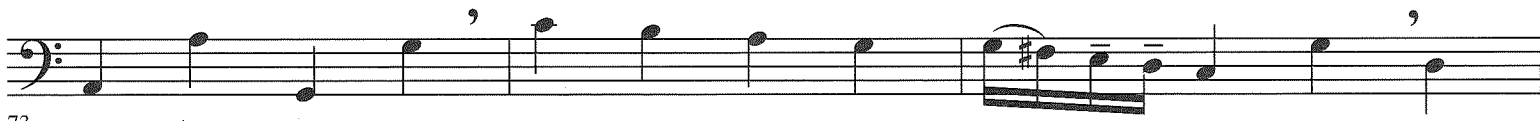
*f* broad legato tongue



66



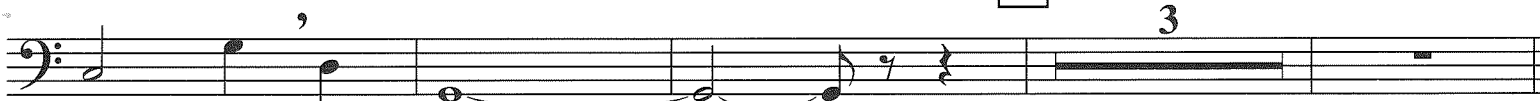
69



73

79 *Poco rubato*

3



76 *dim.* *mp* *poco rit.*

83 *Tempo I*

7

2



*rit.* *a tempo*