

28a
(Optional)

Percussion 4

*Bass Dr., Sus. Cym, &
Tam-tam*

Gardens of Stone

A Concert Work for Orchestra and Narrator

*Original Band Version Commissioned by and Dedicated
to the United States Air Force Band of Flight
Lieutenant Colonel Alan Sierichs, Commander*

by

James A. Beckel Jr.

© 2006 James A. Beckel Jr.
All Rights Reserved

(Optional)
Percussion 4

Bass Dr., Sus. Cym, &
Tam-tam

Gardens of Stone

A Concert Work for Orchestra and Narrator

James A. Beckel Jr.

Original Band Version Commissioned by and Dedicated
to the United States Air Force Band of Flight
Lieutenant Colonel Alan Sierichs, Commander

Adagio ♩ = circa 54 "Sunrise at Arlington Cemetery"

Play

pp Low, Deep Tam-tam p

Detailed description: Musical staff for measures 1-7. Measure 1 starts with a 4/4 time signature. The staff contains notes and rests. Dynamics are marked as pp (pianissimo) and p (piano). A box labeled 'Low, Deep Tam-tam' is positioned below the staff.

8 **5** *to Sus. Cym.* Glock. Cue

Detailed description: Musical staff for measures 8-15. Measure 8 has a 5-measure rest. A box labeled '5' is above the staff. The staff contains notes and rests. A box labeled 'Glock. Cue' is above the staff.

Play **A** *Sus. Cym. Roll* *Soft Mallets* *Let Ring* **Quick to Bass Dr.** *Bass Dr.*

p ff f f

Detailed description: Musical staff for measures 16-20. Measure 16 has a 16-measure rest. A box labeled 'A' is above the staff. The staff contains notes and rests. Dynamics are marked as p (piano), ff (fortissimo), and f (forte). A box labeled 'Quick to Bass Dr.' is above the staff.

21 **B** *Bass Dr.*

f

Detailed description: Musical staff for measures 21-26. Measure 21 has a 21-measure rest. A box labeled 'B' is above the staff. The staff contains notes and rests. A box labeled 'Bass Dr.' is above the staff. Dynamics are marked as f (forte).

27

4

Detailed description: Musical staff for measures 27-34. Measure 27 has a 27-measure rest. The staff contains notes and rests. A box labeled '4' is above the staff.

35 *Molto Ritard* *opt. fermata* *"Past Battles"* **6** *Vamp* **2**

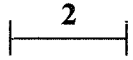
** (Optional Cut to Letter P)*

Detailed description: Musical staff for measures 35-43. Measure 35 has a 35-measure rest. A box labeled '6' is above the staff. The staff contains notes and rests. Dynamics are marked as Molto Ritard and Vamp. A box labeled '2' is above the staff.

C *Play letter C on Cue* **D**

44 *Horn Cue* **12** *Trp. 1 Cue* **2**

Detailed description: Musical staff for measures 44-51. Measure 44 has a 44-measure rest. A box labeled 'C' is above the staff. The staff contains notes and rests. A box labeled '12' is above the staff. A box labeled 'D' is above the staff. Dynamics are marked as Horn Cue and Trp. 1 Cue. A box labeled '2' is above the staff.



Gardens of Stone

Percussion 4

61

5

Snare Dr. Cue

E

70

2

Play

Bass Dr. F

ff

74

f

79

G

mf

ff

84

f

mf

90

H

f

95

mf

100

I

f

Piu f

106



f

112



J

119



Subito *p*

K

126



mf

f

L

132



Piuf

f

ff

138



M

"21 Gun Salute"

Tacet if using real rifles
for the "21 Gun Salute"

144

G.P.



ffff

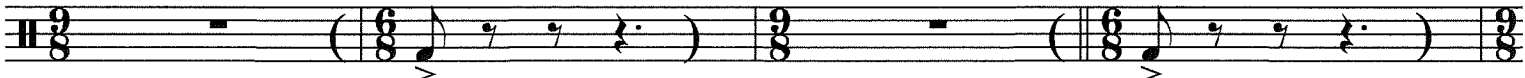
Tacet if using real rifles
for the "21 Gun Salute"

Tacet if using real rifles
for the "21 Gun Salute"

148

G.P.

G.P.



N **Meno mosso** ♩ = circa 104

152

G.P.

Stay on Bass Dr.

O **Lento** ♩ = circa 48 "Taps"

161

Trp. 1 Cue

Play Bass Dr.

pp

166

mf

mp

P (When taking optional cut, omit downbeat at P)

171

pp

pp

Q

175

2

13

R

190

Snare Dr. Cue

(possible) poco a poco accel.

Violin 2 Cue

S **Adagio** ♩ = circa 54 "Parade of the Fallen Heros"

(opt. rit. if needed)

194

6

Play Bass Dr.

f

8

T

212

Bass Dr.

f

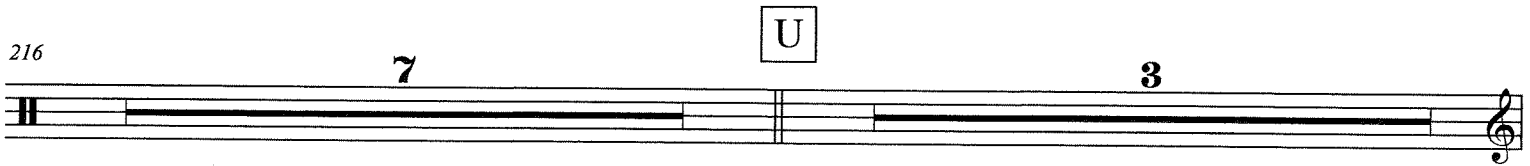
To Sus. Cym.

216

7

U

3



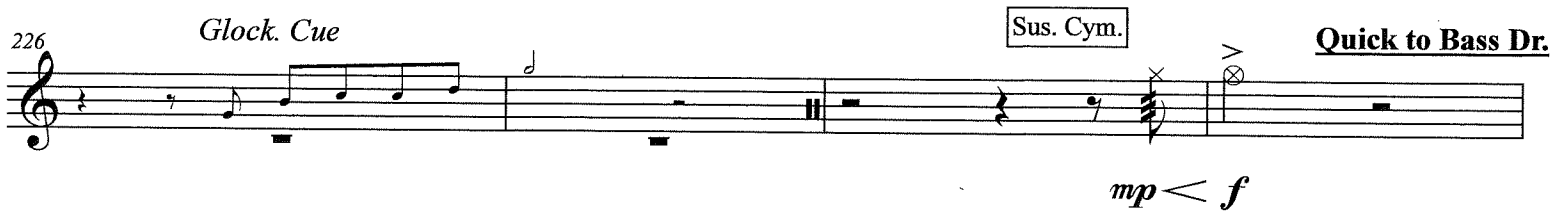
226

Glock. Cue

Sus. Cym.

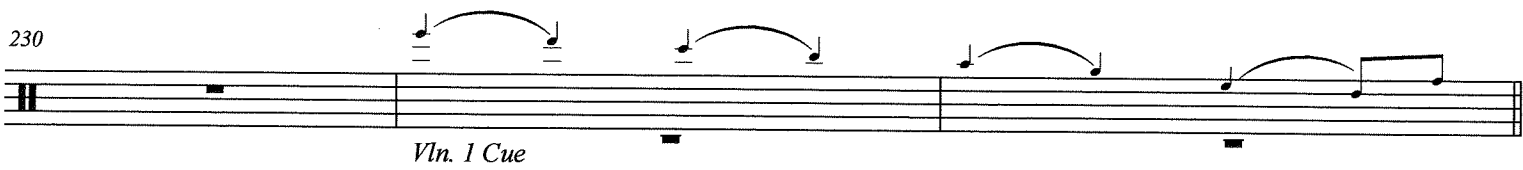
Quick to Bass Dr.

mp < *f*



230

Vln. 1 Cue

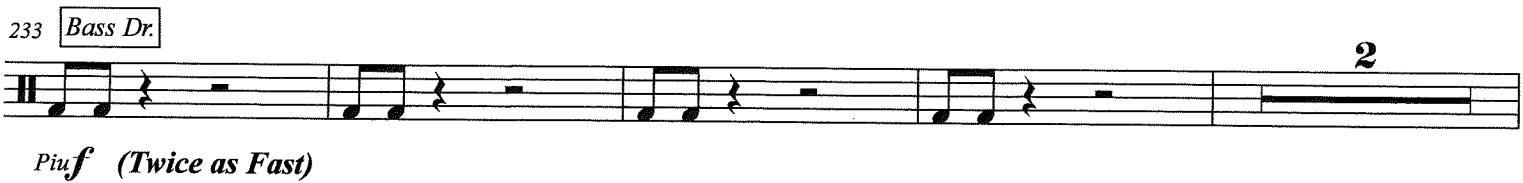


V Doppio movimento ♩ = circa 108

233 Bass Dr.

2

Piu f (Twice as Fast)



239

ff *f* *ff*

