

Contrabass

# ELEPHANT LOVE MEDLEY

See conductor score for song title and writer/copyright details

Freely (*colla voce*)

**A** Bright Swing ♩ = 184

Musical notation for section A, measures 1-12. The key signature is two sharps (F# and C#). The time signature is 4/4. The piece starts with a fermata over the first two measures, labeled "(Dialogue)". The third measure has a fermata and is marked "(Bell)". The fourth measure has a fermata and is marked "4". The fifth measure has a fermata and is marked "4". The sixth measure has a fermata and is marked "pizz.". The seventh measure has a fermata and is marked "mf".

**B** Slower ♩ = 120

A Little Faster ♩ = 132

Musical notation for section B, measures 13-21. The key signature changes to one sharp (F#). The time signature is 4/4. The piece starts with a fermata and is marked "rit.". The second measure has a fermata and is marked "arco". The third measure has a fermata and is marked "mf". The fourth measure has a fermata and is marked "f". The fifth measure has a fermata and is marked "2". The sixth measure has a fermata and is marked "f".

**C**

Musical notation for section C, measures 22-28. The key signature is one sharp (F#). The time signature is 4/4. The piece starts with a fermata and is marked "mp".

Musical notation for section C, measures 29-35. The key signature is one sharp (F#). The time signature is 4/4. The piece starts with a fermata and is marked "mp".

**D** Freely (*colla voce*)

Musical notation for section D, measures 36-43. The key signature is two sharps (F# and C#). The time signature is 4/4. The piece starts with a fermata and is marked "subito p".

accel.

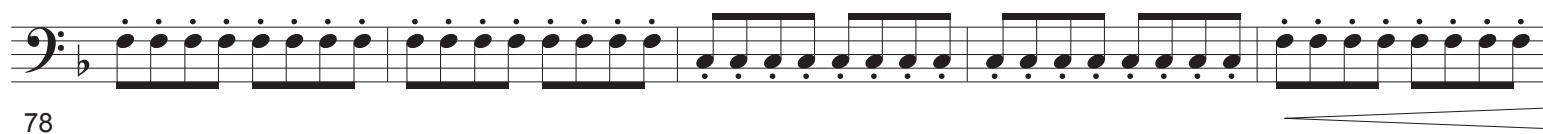
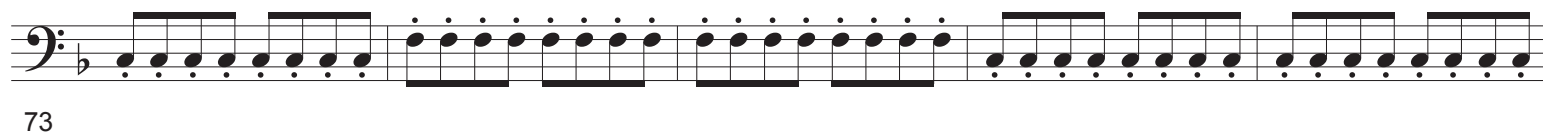
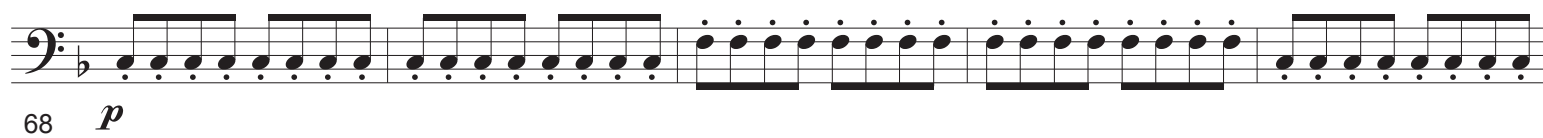
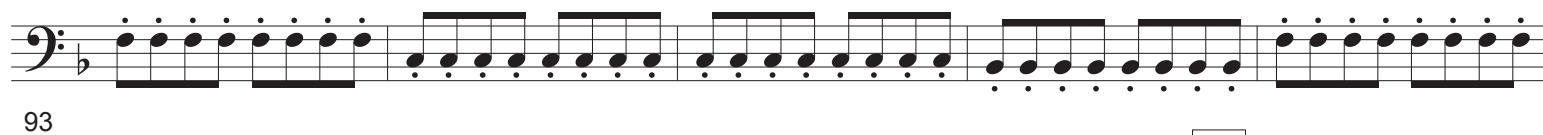
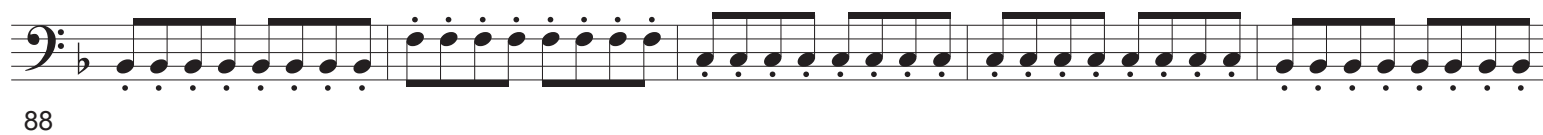
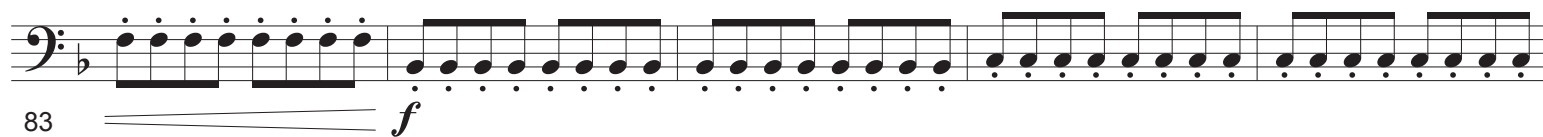
**Driving** ♩ = 150

Musical notation for section D, measures 44-49. The key signature is two sharps (F# and C#). The time signature is 4/4. The piece starts with a fermata and is marked "mf".

**E**

Musical notation for section E, measures 50-58. The key signature changes to one flat (Bb). The time signature is 4/4. The piece starts with a fermata and is marked "f".

Musical notation for section E, measures 59-66. The key signature is one flat (Bb). The time signature is 4/4. The piece starts with a fermata and is marked "f".

**F** A Little Slower ♩ = 132

**G**

**H** Grand ♩ = 60
